

# THE PUZZLING SIDE OF CHESS

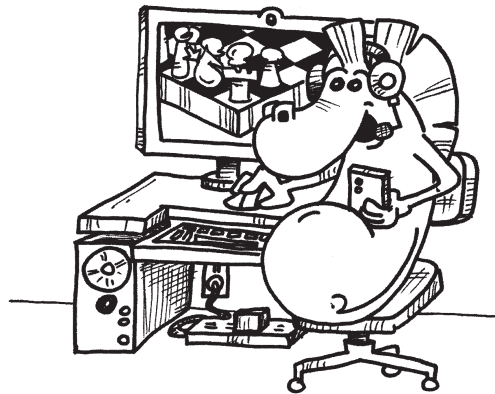
Jeff Coakley

## SMORGASBORD XLIV Scholarly Mates

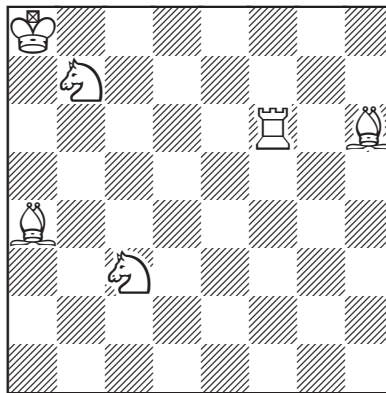
number 259

May 28, 2026

Breaking news: The Puzzling Side has acquired its own domain. The column can still be accessed through *coakleychess.com* or now directly at *puzzlingsideofchess.com*. Either way, you end up at the same spot. That information, though not actually very newsworthy, does suffice as an intro for the column. With that out of the way, here are the problems.



### Triple Loyd 98

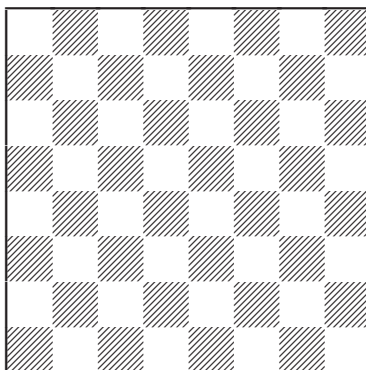


Place the black king on the board so that:

- A. Black is in checkmate.
- B. Black is in stalemate.
- C. White has mate in 1.

The following puzzle is a new twist on an old construction task from columns 15 and 181. The main stipulation, a defensive loop with eight officers, is still the same. But this time the pieces may only be placed along the edge of the board.

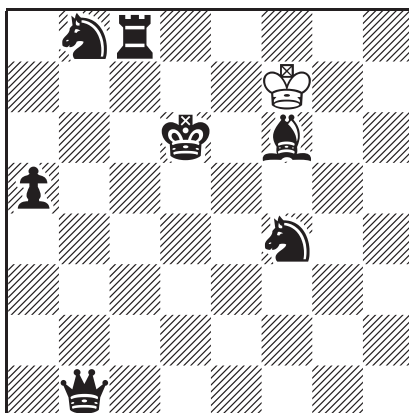
### Eight Officer Defensive Loop *on the edge*



Place the eight officers on the board so that each piece is defended exactly once and each piece defends exactly one other. All pieces must be placed on the edge of the board (ranks 1,8 / files a,h). Bishops must be on opposite-colours.

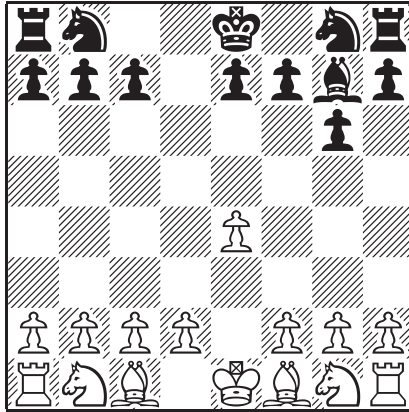
The defensive chain should form a continuous *loop*. The first piece guards the second piece; the second guards the third; the third guards the fourth; ...; and the eighth guards the first.

### Inverted Loyd 77



Add a white rook, bishop, and knight  
so that White has mate in 1.

**Longer Proof Game 169** (5.5 moves)

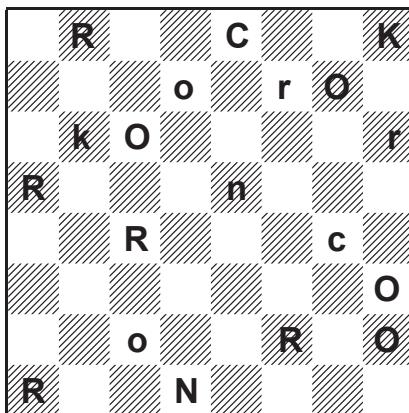


This position was reached after White's sixth turn.  
What were the moves?



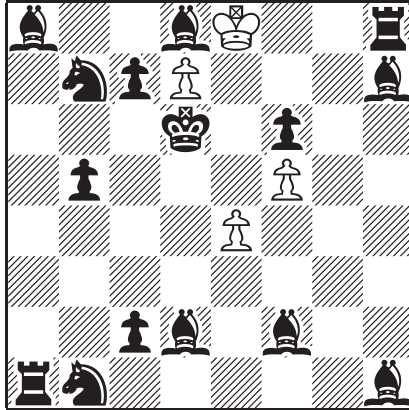
**Rebus 149**

*"Rock On"*



Each letter represents a different type of piece.  
Uppercase is one colour, lowercase is the other.  
Determine the position.

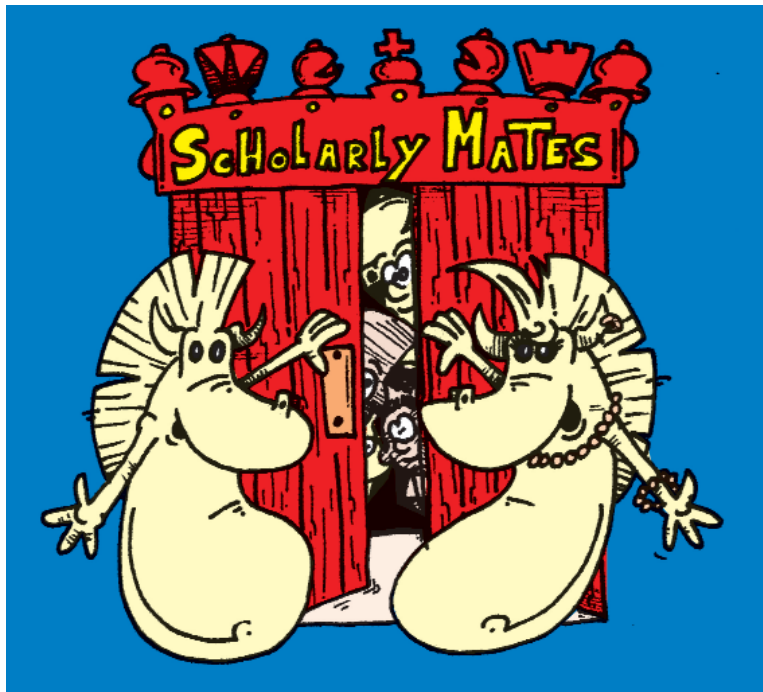
## Multi-Wham 115



series-mate in 37

White plays thirty-seven moves in a row to mate Black.

Captures are allowed. Only the last move may give check. Black does not get a turn.



**NEWS FLASH:** We're sorry to preempt your regularly scheduled final problem, but this important developing story cannot wait. A new chess magazine for kids called **Scholarly Mates** was launched this week. Published every two months by *Mooserider Productions*, it features the same kind of content and artwork as the *Winning Chess For Kids* books by Jeff Coakley. Whoever that guy is, he also happens to be the magazine editor. With illustrations by the illustrious Antoine Duff.

*Scholarly Mates* is available in pdf format for viewing or download at:

[www.mooserider.ca](http://www.mooserider.ca)

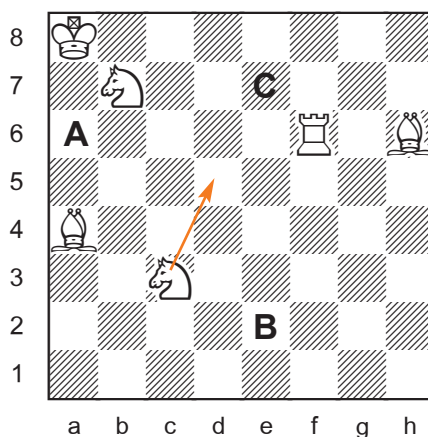
## SOLUTIONS

All problems by J. Coakley, *Puzzling Side of Chess* (2026). Rebus 149 is a joint composition with Andriy Frolkin.

**PDF hyperlinks.** You can advance to the solution of any puzzle by clicking on the underlined title above the diagram. To return to the puzzle, click on the title above the solution diagram.

**Archives.** Past columns are available in the *Puzzling Side* archives.

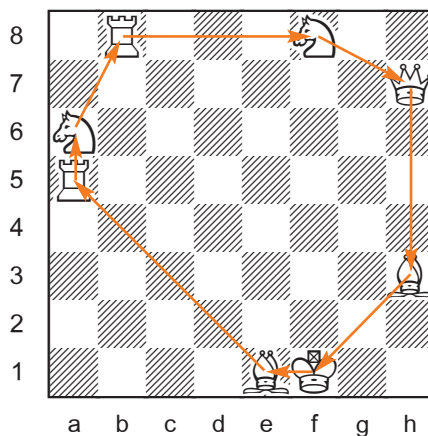
### Triple Loyd 98



- A. Ka6#
- B. Ke1=
- C. Ke7 (Nd5#)

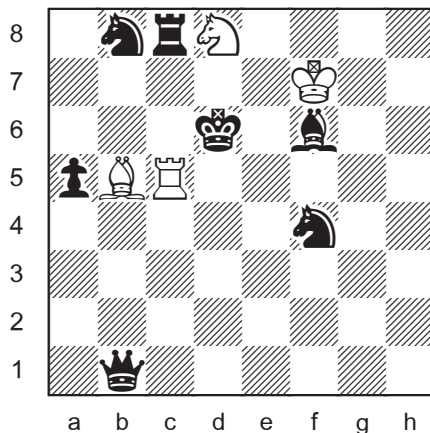
### Eight Officer Defensive Loop

*All pieces on edge squares*

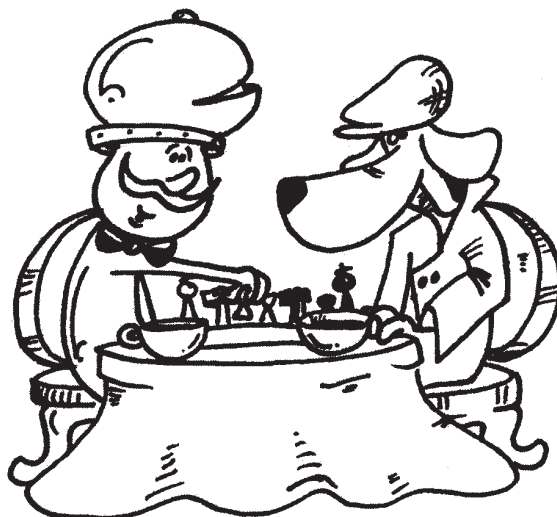


Kf1-Be1-Ra5-Na6-Rb8-Nf8-Qh7-Bh3 Other solutions are possible.

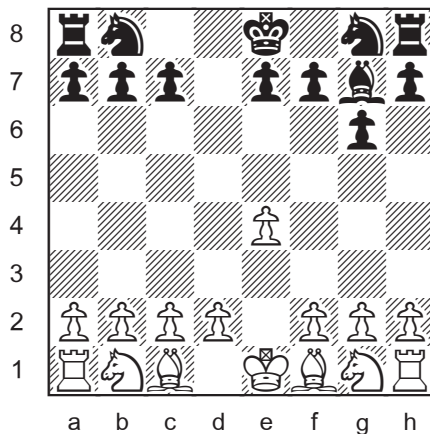
### Inverted Loyd 77



Add Rc5 Bb5 Nd8  
1.Nb7#



### Longer Proof Game 169 (5.5 moves)

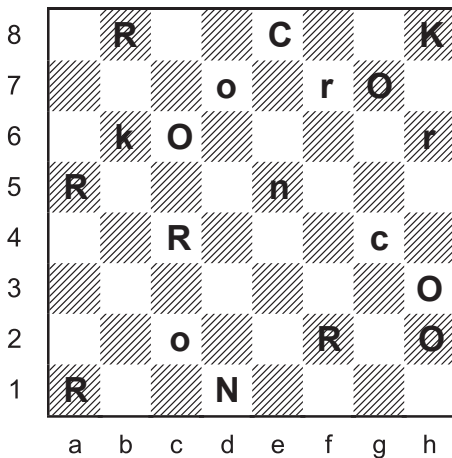


1.e3 g6 2.Qg4 Bg7 3.Qxd7+ Kf8 4.Qxc8 Qe8 5.Qxe8+ Kxe8 6.e4  
Switchback by black king. White pawn tempo.

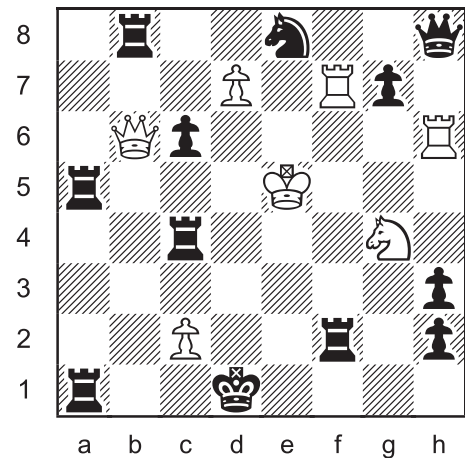
## Rebus 149

Andriy Frolkin & Jeff Coakley

"Rock On"



R = rook  
 O = pawn  
 C = knight  
 K = queen  
 N = king  
 caps = black  
 last move  
 1...R>a5+



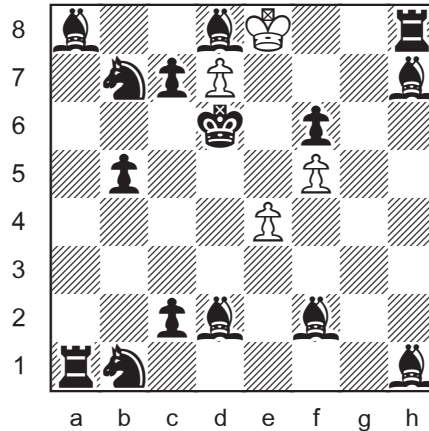
(7 + 12)

- ♔ = (CKN) Letters with one uppercase, one lowercase.
- CNRK ≠ ♖ On 1st or 8th rank.
- C ≠ ♔ If C = ♔ One king is in check by letter R (c4 f2 f7).  
 One king is in check by letter O (d7 g7 h2 h3).  
 No legal double check is possible.
- K ≠ ♔ If K = ♔ R ≠ ♔♖♘ Both kings in check.  
 R ≠ ♗ Impossible double check (a5 f2).  
 R = ∅? No piece can be assigned to R.
- N = ♔ R = (♖♘) R ≠ ♔♗ Impossible double check (a1 b8).  
 The king on e5 is in check by R (♖a5 or Nc4).
- C = ♘ C ≠ ♔♖ Impossible double check (e8)  
 C ≠ ♗ Both kings in check (g4).
- R = ♖
- O = ♖ O ≠ ♔♗ Both kings in check (c2).
- caps = black caps ≠ white Both kings in check (pawn c2).
- K = ♔ K ≠ ♗ Impossible to have a black bishop on h8  
 with a black pawn g7.

last move: 1...R>a5+ This move may or may not have been a capture.

*Rock on!*

## Multi-Wham 115

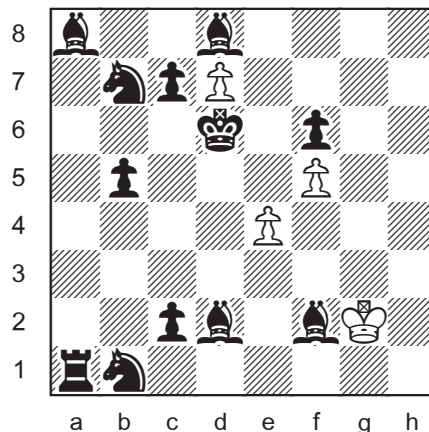


series-mate in 37

One thing to note first is that the white e-pawn will never be able to move unless it advances to give mate, which it won't. So one or both of the other white pawns will have to promote.

The bishop on d8 blocks the white d-pawn and guards the pawn on f6 which blocks the white f-pawn. Therefore the white king must capture the bishop on d8. That bishop is guarded by the knight on b7, which means the king must make a long journey around the board. It's not obvious at this point, but that will require going to all four corners.

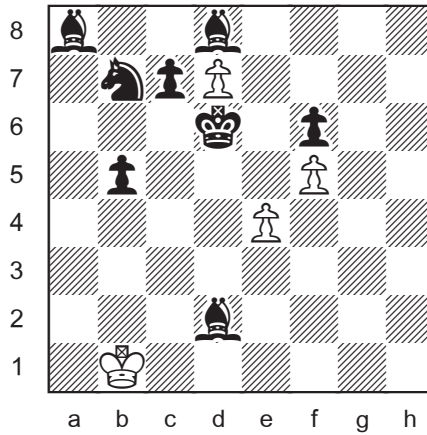
1.Kf7 2.Kg7 3.Kxh8     There are not any options for a while.  
 4.Kxh7 5.Kg6 6.Kh5 7.Kg4 8.Kh3 9.Kh2 10.Kxh1 11.Kg2



12.Kxf2     The bishop on f2 is captured so that the king can get to the last rank through a7.

13.Ke2 14.Kd3 15.Kxc2 16.Kb2 17.Kxa1 18.Kxb1

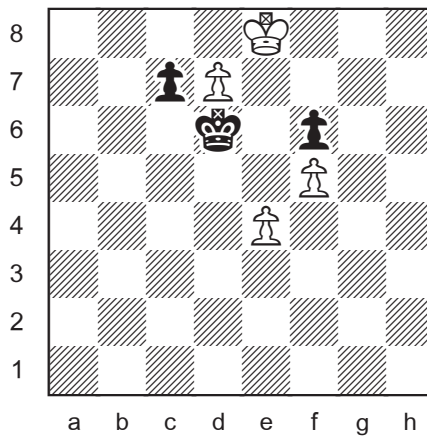
The knight on b1 has to be captured because it guards the bishop on d2 which must be eliminated for the king to reach b5.



The king can auto-pilot to d8 now.

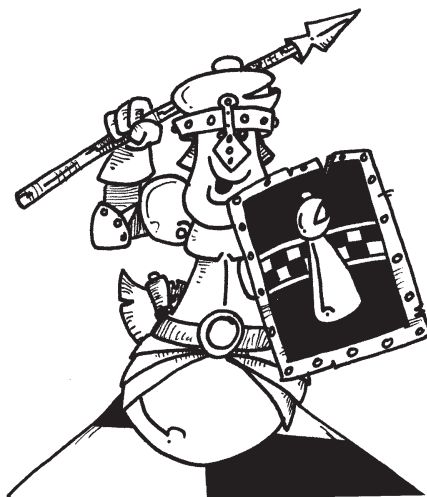
19.Kc2 20.Kxd2 21.Kc3 22.Kb4 23.Kxb5 24.Ka6 25.Ka7 26.Kxa8  
27.Kxb7 28.Kc8 29.Kxd8 30.Ke8

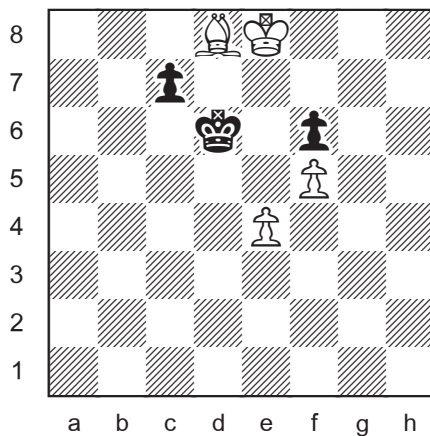
The king completes a full circuit, returning to where he started. He goes to e8 rather than c8 because that is his station for the mating net.



31.d8=B

A queen or rook would check. A knight is 3 moves too slow. So a bishop it is!

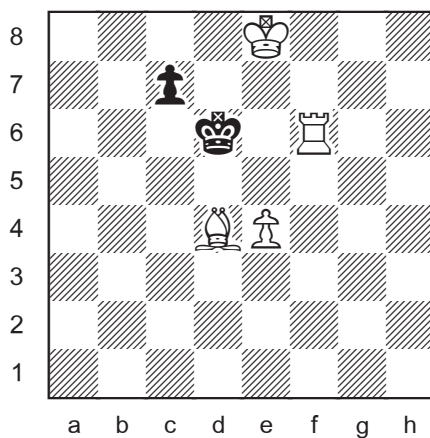




32.Bxf6 33.Bd4

The bishop moves to control the c5 and e5 squares. It isn't hard now to see the mate in 4.

34.f6 35.f7 36.f8=R 37.Rf6#



**MOOSERIDER  
PRODUCTIONS**

[www.mooserider.ca](http://www.mooserider.ca)

Until next time!

© Jeff Coakley 2026. Illustrations by Antoine Duff. All rights reserved.