



# THE PUZZLING SIDE OF CHESS

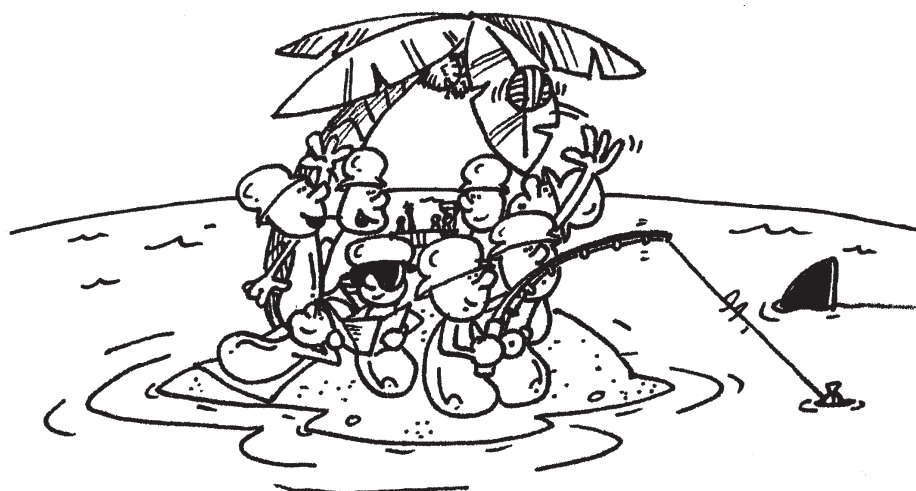
Jeff Coakley

## SMORGASBORD XLII    On An Island

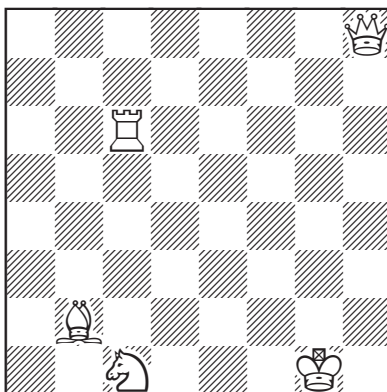
number 253

November 29, 2025

This smorgasbord column features the usual assortment of problems. To fill the empty spaces, a few seaside photos from life on an island.



### Triple Loyd 96

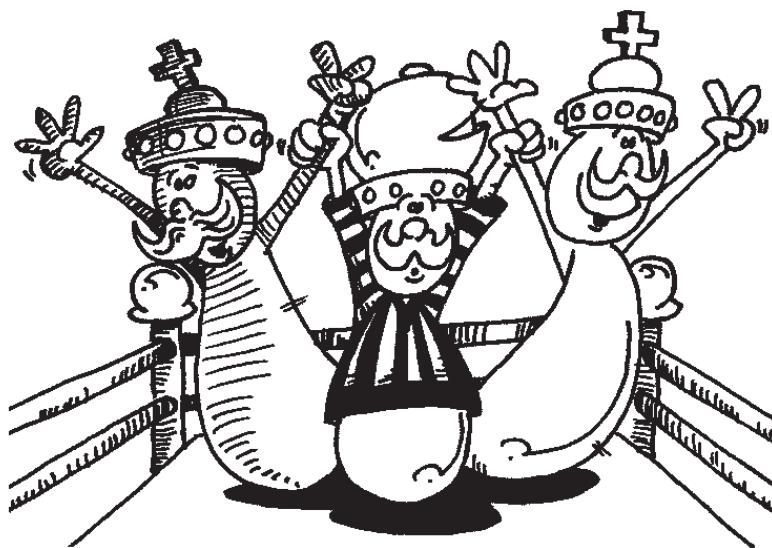


Place the black king on the board so that:

- A. Black is in checkmate.
- B. Black is in stalemate.
- C. White has mate in 1.

The next puzzle continues an unusual task from columns 244 and 250.

### Win-Win Situation



Construct a position with neither king in check so that one move by White checkmates both kings.

White's move will necessarily be illegal because it puts their own king in check but otherwise the position and mates should be legal.

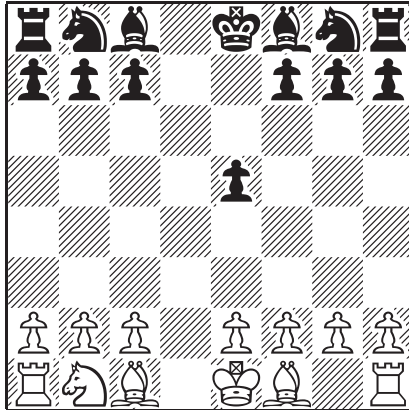
What is the minimum number of pieces necessary?

F. for an *en passant* capture.



*Shadowman*

### Longer Proof Game 159 (5.0 moves)

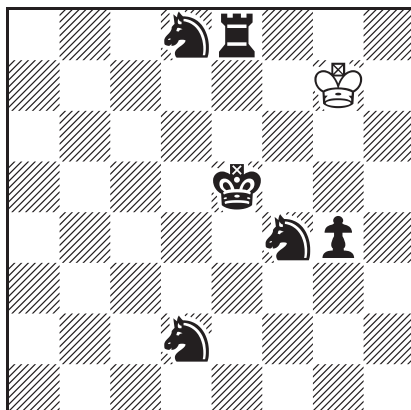


This position was reached after Black's fifth turn.  
What were the moves?

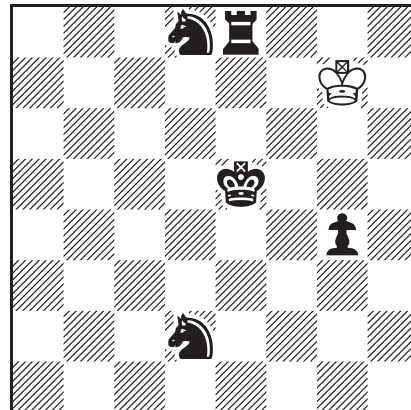


*Gulf of St. Lawrence*

### Inverted Loyd 74



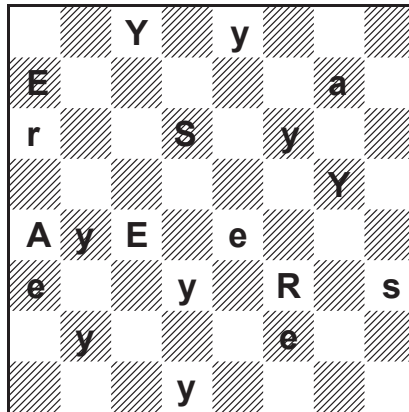
### Inverted Loyd 75



Add a white rook, bishop, and knight so that White has mate in 1.

## Rebus 142

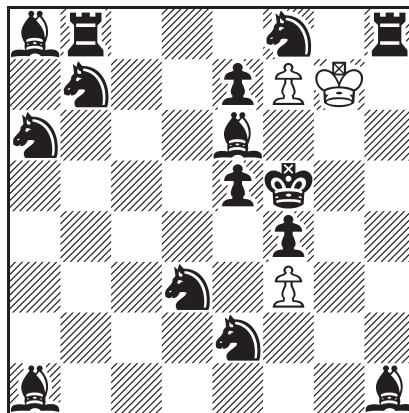
*"years"*



Each letter represents a different type of piece.  
Uppercase is one colour, lowercase is the other.  
Determine the position and, if possible, the last move.



## Multi-Wham 109



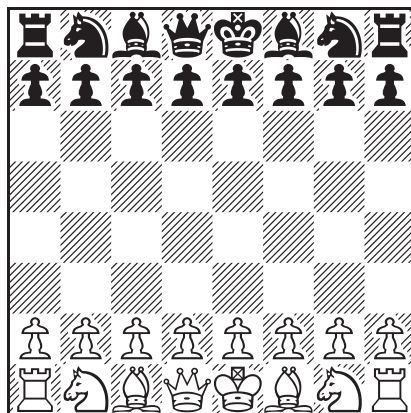
series-mate in 39

White plays thirty-nine moves in a row to mate Black.  
Captures are allowed. Only the last move may give check. Black does not get a turn.

Our final puzzle is perhaps the most difficult synthetic game ever. It certainly stumped me, despite many days of repeated attempts. I'm very grateful to IM Stuart Rachels for sharing the solution.

Congratulations if you are able to solve this one!

### Synthetic Game 61



Compose a game that ends with 8...Ka8#.



*Friend on Beach with Dog and Sun*

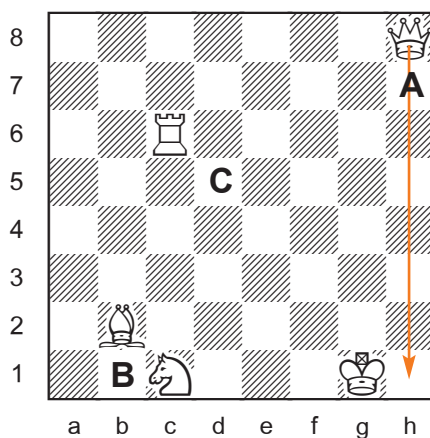
## SOLUTIONS

All problems except synthetic game 61 by J. Coakley, *Puzzling Side of Chess* (2025). Rebus 142 is a joint composition with Andriy Frolkin.

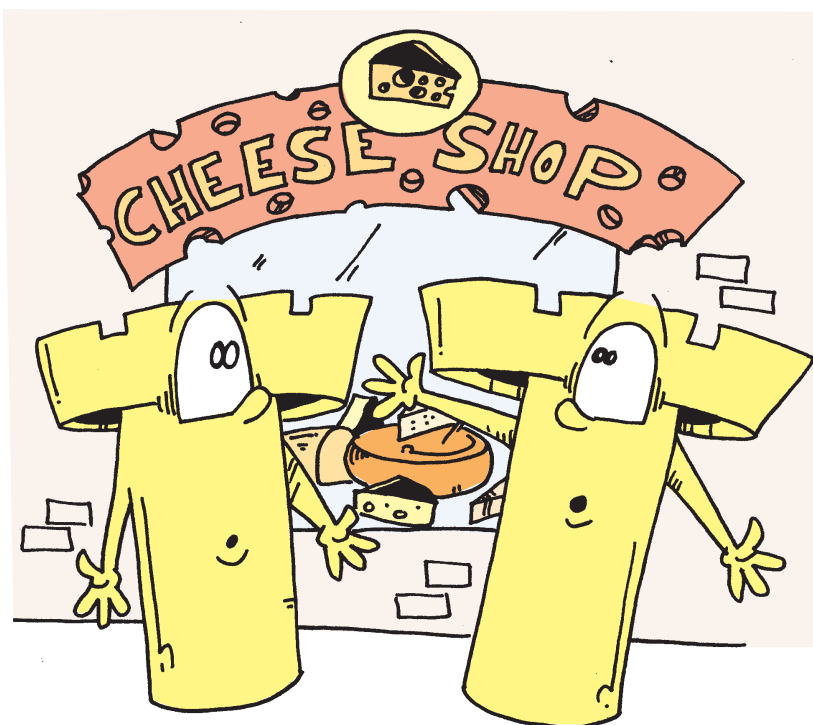
**PDF hyperlinks.** You can advance to the solution of any puzzle by clicking on the underlined title above the diagram. To return to the puzzle, click on the title above the solution diagram.

**Archives.** Past columns are available in the *Puzzling Side* archives.

### Triple Loyd 96



- A. Kh7#
- B. Kb1=
- C. Kd5 (Qh1#)



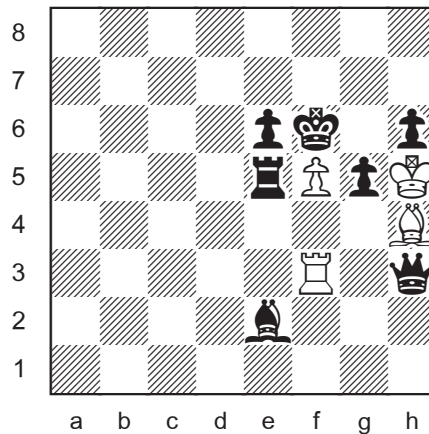
*The misguided rooks thought they were going to a chess shop.*



## Win-Win Situation

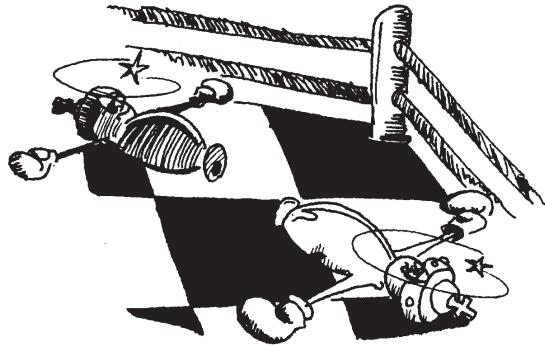
Both kings are mated after White's move.  
Can anyone break this record for fewest pieces?

### F. *en passant* capture

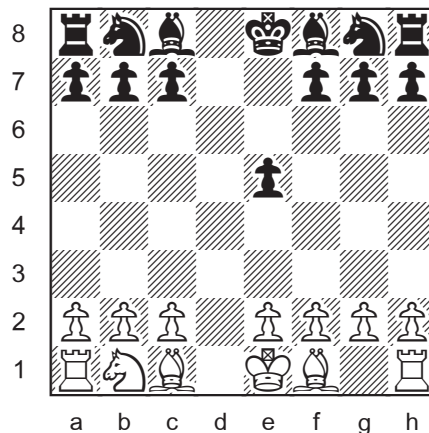


1.fxg6 e.p.## (11 pieces)

The assumption is that Black's last move was ...g7-g5. A slightly less economical version of this position has black bishop e6, black rook h3.

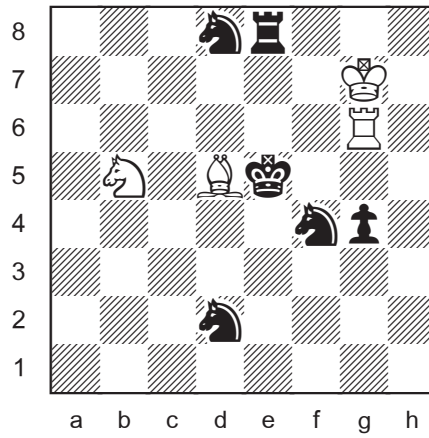


### Longer Proof Game 159 (5.0 moves)



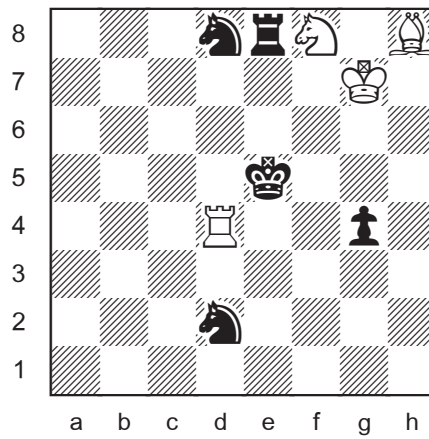
1.Nf3 e5 2.Nh4 Qxh4 3.d4 Qxd4 4.Qxd4 d6 5.Qxe5+ dxe5  
Curious queen sacrifices.

### Inverted Loyd 74



Add Rg6 Bd5 Nb5  
1.Rg5#

### Inverted Loyd 75



Add Rd4 Bh8 Nf8.  
1.Kg6#

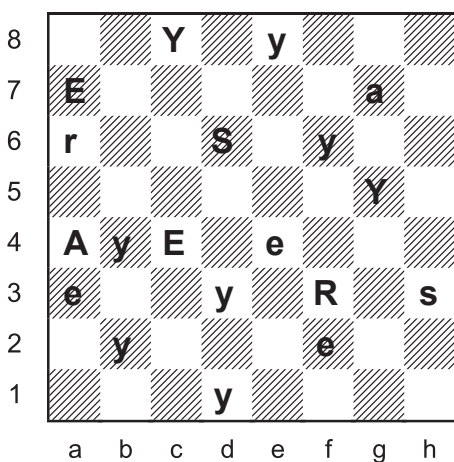




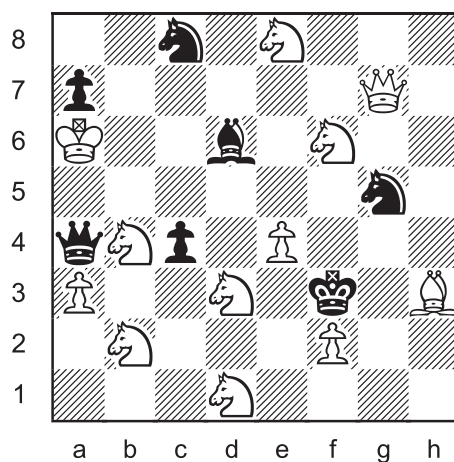
## Rebus 142

Andriy Frolkin & Jeff Coakley

"years"



Y = knight  
E = pawn  
A = queen  
R = king  
S = bishop  
caps = black  
last move  
1...Q>a4+



♔ = (ARS)

Letters with one uppercase, one lowercase.

(12 + 7)

♙ ≠ Y

On 1st rank.

A ≠ ♔

If A = ♔

Y ≠ ♔♖

Both kings in check (b4 g5).

Y ≠ ♗

Impossible double check (d1 e8).

Y ≠ ♘

Impossible check (b2).

Y ≠ ∅

No piece can be assigned to Y.

S ≠ ♔

If S = ♔

Y ≠ ♔♖

Impossible double check (d3 f6).

Y ≠ ♗

Both kings in check (b4 c8).

Y ≠ ♘

Both kings in check (e8 g5).

Y ≠ ∅

No piece can be assigned to Y.

R = ♔

Y = ♘

Y ≠ ♔♖

Impossible double check (d3 f6).

Y ≠ ♗

Both kings in check (c8 d1).

E = ♙

E ≠ ♔♖

Both kings in check (a7 f2).

E ≠ ♗

Both kings in check (c4 e4).

S = ♗

S ≠ ♔♖

Both kings in check (d6 h3).

A = ♔

A ≠ ♖

Impossible check (a4).

Check (a4).

**caps = black**

If caps = white

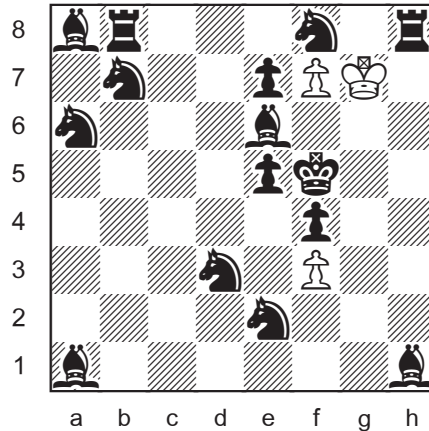
Impossible double check (pawn e4).

last move: 1...Q>a4+

This move may or may not have been a capture.

*The years go flashing by, like a shooting star across the sky.  
And the lucky who survive, someday turn the big 7 5.*

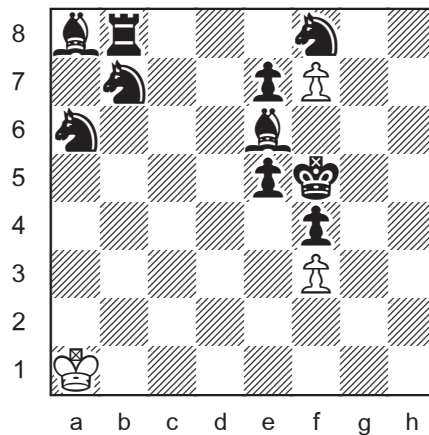
## Multi-Wham 109



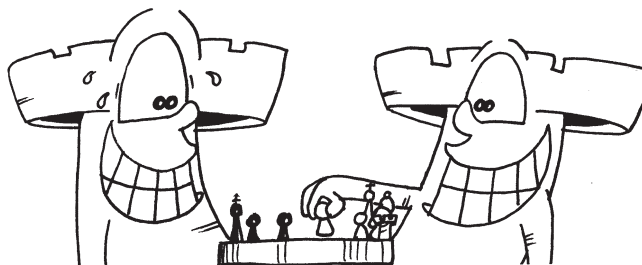
series-mate in 39

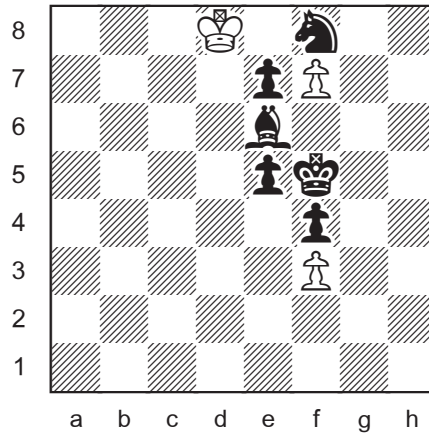
The white king cannot capture on f4 to free the pawn on f3, so he must capture the knight on f8 in order to promote the pawn on f7. That knight is guarded by the rooks on h8 and b8. To reach f8, the white king must circumnavigate the board, capturing most of the black pieces along the way, including those in all 4 corners!

1.Kxh8 2.Kg7 3.Kh6 4.Kh5 5.Kh4 6.Kh3 7.Kh2 8.Kxh1 9.Kg2 10.Kf1  
11.Kxe2 12.Kxd3 13.Kc2 14.Kb1 15.Kxa1



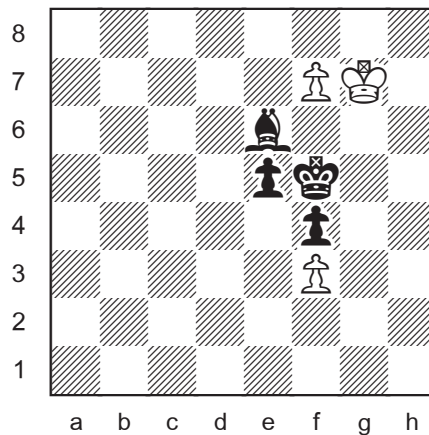
16.Kb2 17.Ka3 18.Ka4 19.Kb5 20.Kxa6 21.Ka7 22.Kxb8 23.Kxa8  
24.Kxb7 25.Kc7 26.Kd8



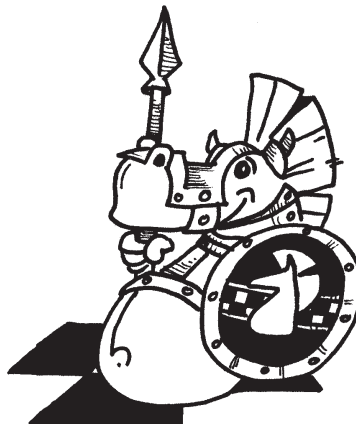


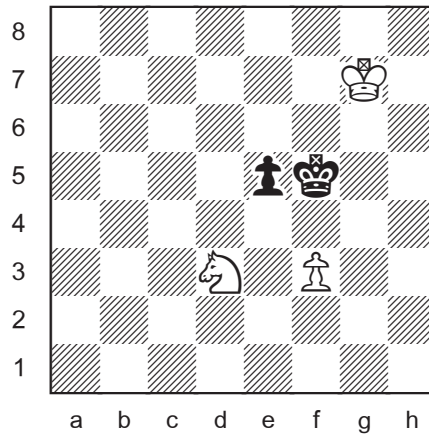
27.Kxe7 Looking ahead: The pawn on f7 will not be able to promote to queen or rook because it would be check. So the pawn on f3 must also promote to achieve mate. After the black pawn on f4 is eventually captured, the white pawn will capture on e5 and promote on e8. To clear its path, the black pieces on e6 and e7 must be captured. The king captures on e7 now and the first promotion must be a knight (not a bishop) in order to capture the bishop on e6.

28.Kxf8 29.Kg7 His majesty returns to where he started!

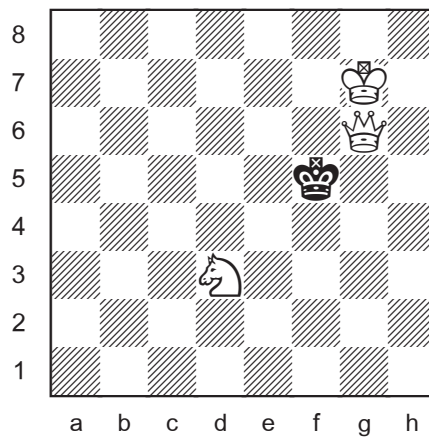


30.f8=N 31.Nxe6 32.Nxf4 33.Nd3 Taking his post for the coming mate.





34.f4 35.fxe5 36.e6 37.e7 38.e8=Q 39.Qg6#

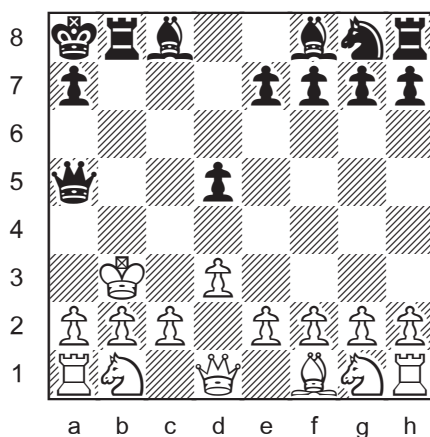


*Confederation Bridge*  
New Brunswick to Prince Edward Island (13 km)

## Synthetic Game 61

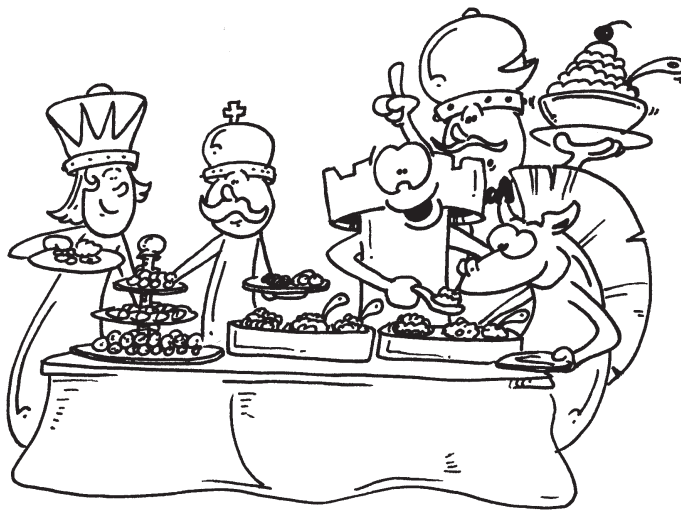
Alex Fishbein & Stuart Rachels ~2015

*Puzzling Side of Chess 2025*



1.d3 d5 2.Be3 b6 3.Bxb6 Kd7 4.Bxc7 Kc6  
5.Bxb8 Rxb8 6.Kd2 Kb7 7.Kc3 Qa5+ 8.Kb3 Ka8#

This solution, which except for move order is probably unique, was found by GM Alex Fishbein and IM Stuart Rachels about ten years ago as part of their “quick-mate” project. As far as I know, it has not been published before.



Hope you enjoyed the smorgasbord!

© Jeff Coakley 2025. Illustrations by Antoine Duff. All rights reserved.