

# THE PUZZLING SIDE OF CHESS

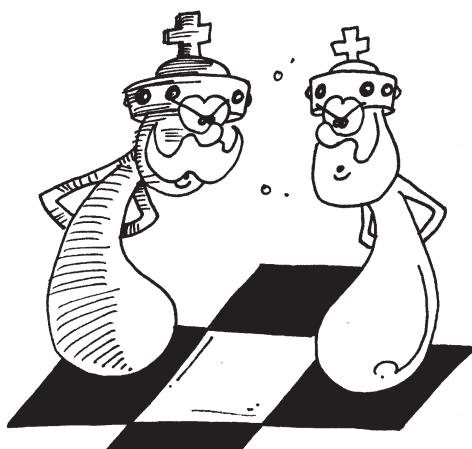
Jeff Coakley

## DOUBLE ROYAL Where are the Kings?

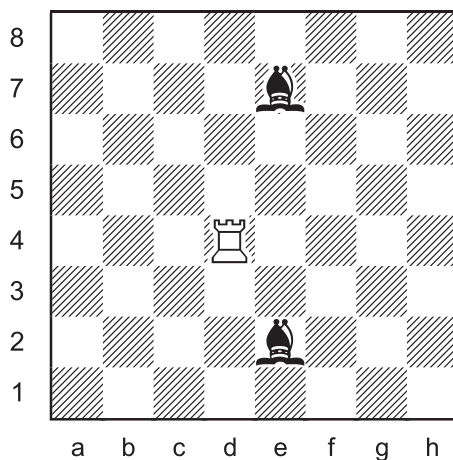
number 247

May 24, 2025

Here on the *Puzzling Side*, problems in which pieces are added to a given position so that there is a mate in 1 are called *loyds*, in honour of the great Sam Loyd. In a *triple lloyd*, the black king is added. In an *inverted lloyd*, white pieces are added. This column puts another twist on the puzzles. In *double royal loyds*, both kings are added!



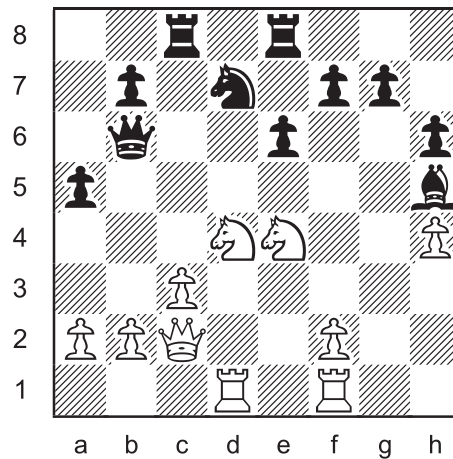
### Double Royal Loyd 13



Add both kings so that White has mate in 1.

This type of problem is not new. A few have been published by other composers over the years. The first was exactly 100 years ago by George Hume (1862-1936) of Scotland, presented in column 53.

### Double Royal Loyd 14

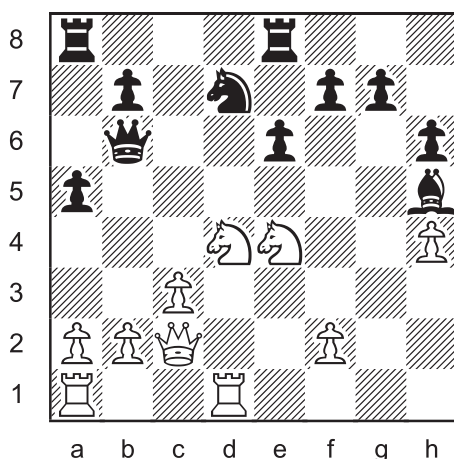


Add both kings so that White has mate in 1.

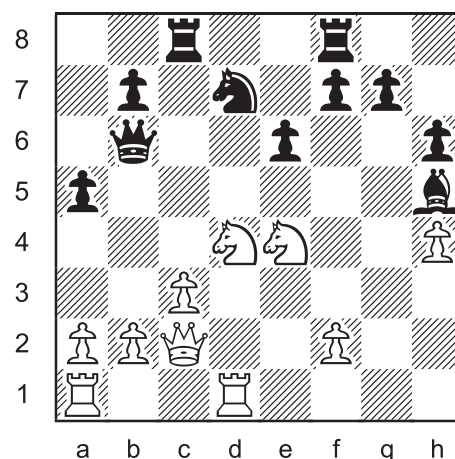


The rest of the puzzles in this article are approximate twins. A small change or two, here or there, makes all the difference.

### Double Royal Loyd 15



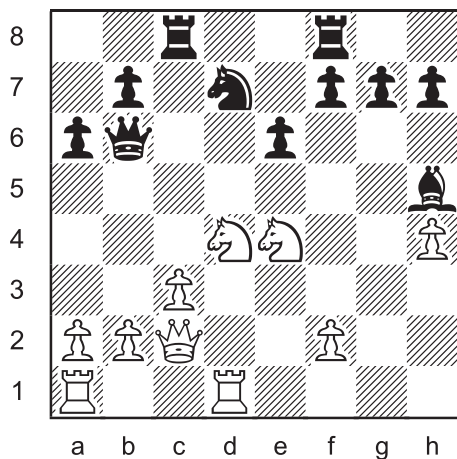
### Double Royal Loyd 16



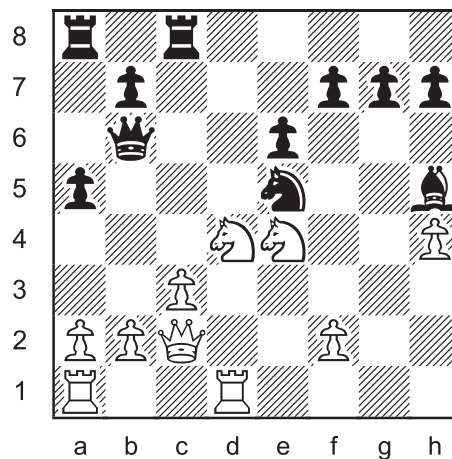
Add both kings so that White has mate in 1.

Wilhelm Steinitz (1836-1900), the first world chess champion, wisely asserted that “the king is a strong piece”. In these puzzles, the white king necessarily plays a key role in the mates. Otherwise he could be put on almost any safe square.

**Double Royal Loyd 17**



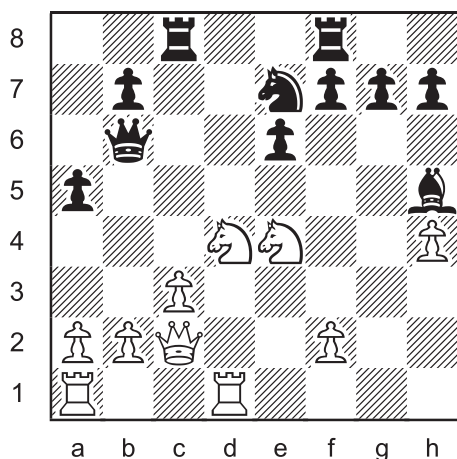
**Double Royal Loyd 18**



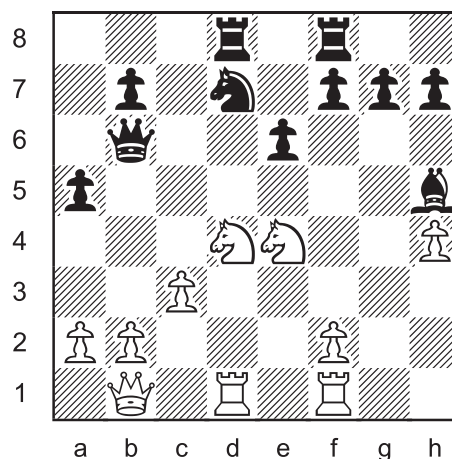
Add both kings so that White has mate in 1.



**Double Royal Loyd 19**



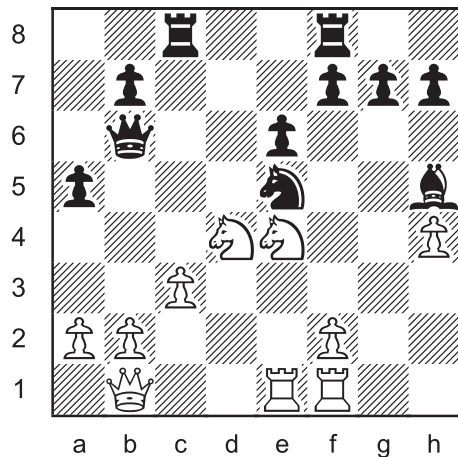
**Double Royal Loyd 20**



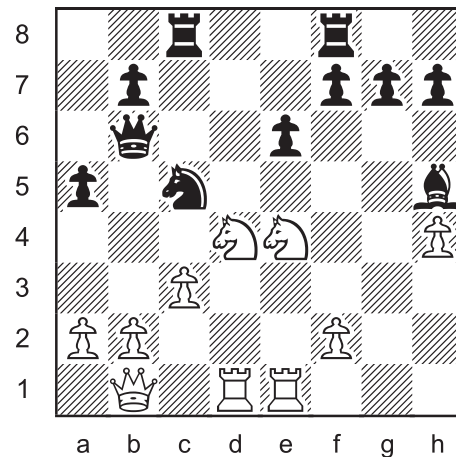
Add both kings so that White has mate in 1.

This column is the first of three in a series on double royal loyds using the same “zero position”. It’s surprising how many different places the kings can go.

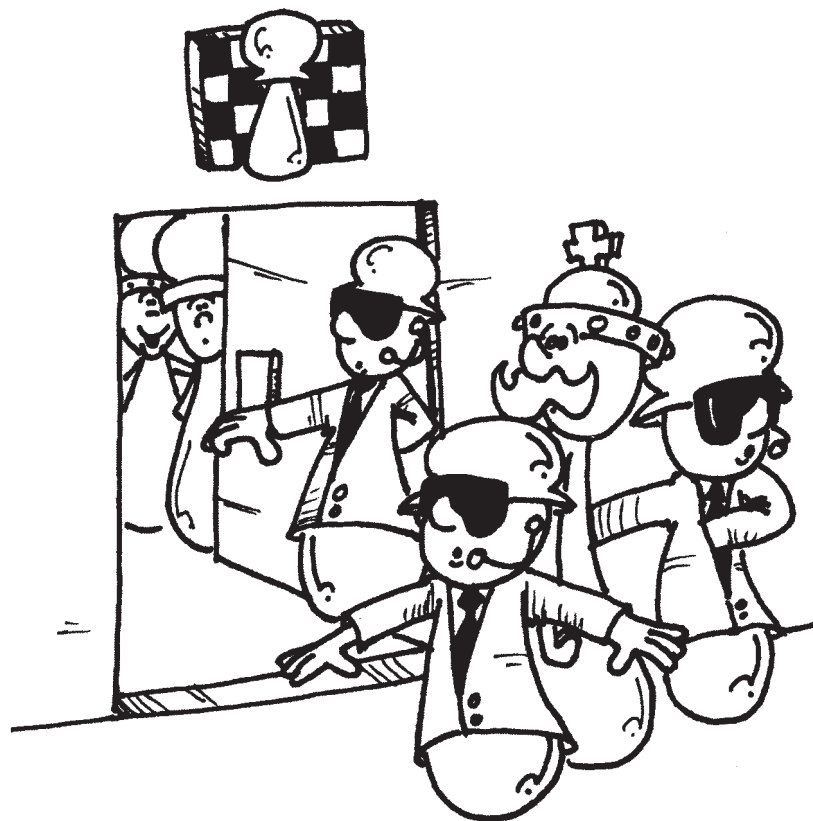
**Double Royal Loyd 21**



**Double Royal Loyd 22**



Add both kings so that White has mate in 1.



*The Royal Security Service*  
*“King safety is no joke.”*

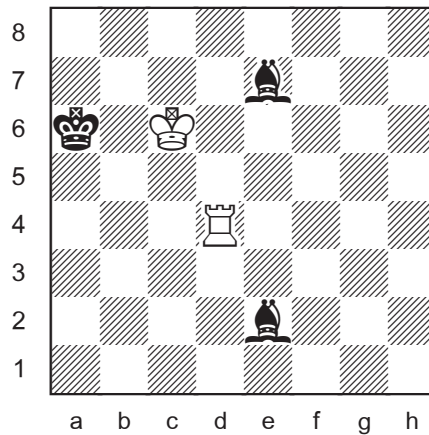
## SOLUTIONS

All problems by J. Coakley, *Puzzling Side of Chess* (2025).

**PDF hyperlinks.** You can advance to the solution of any puzzle by clicking on the underlined title above the diagram. To return to the puzzle, click on the title above the solution diagram.

**Archives.** Past columns and a detailed index of problem-types and composers are available in the *Puzzling Side of Chess* archives.

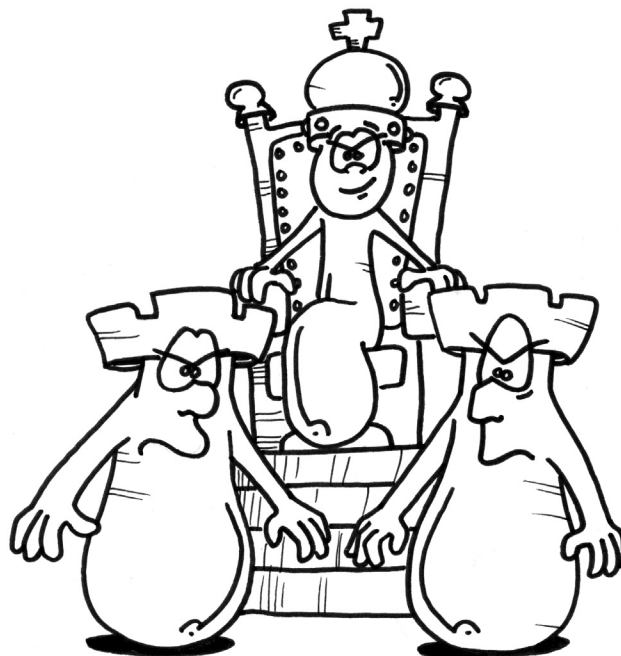
### Double Royal Loyd 13



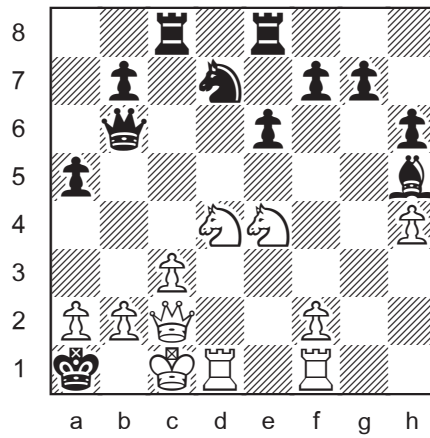
Add wKc6 bKa6.

1.Ra4#

A basic example of the fun to follow.

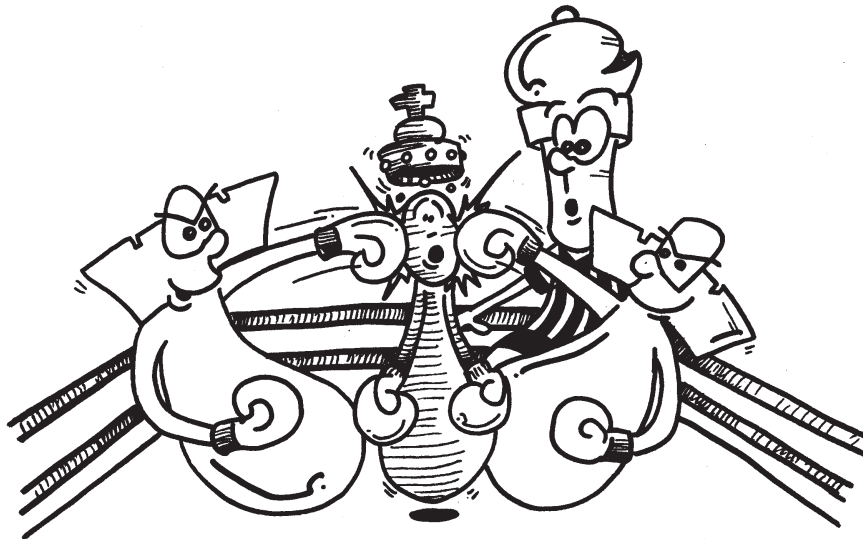


### Double Royal Loyd 14

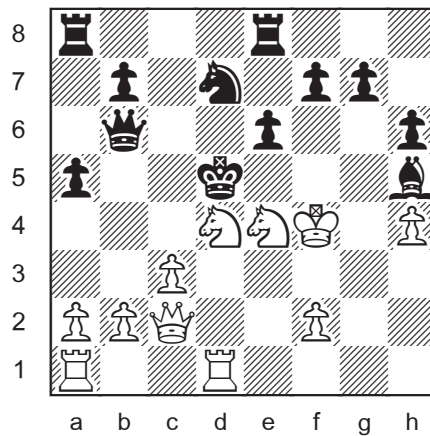


wKc1 bKa1

1.Qb1#



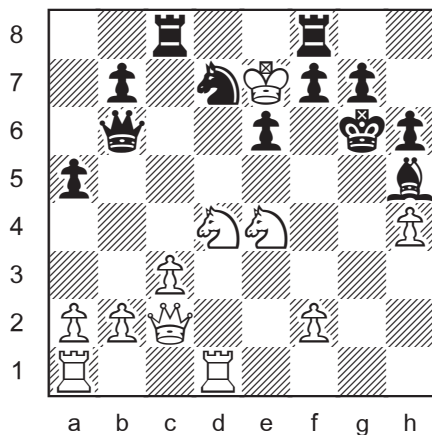
### Double Royal Loyd 15



wKf4 bKd5

1.c4#

## Double Royal Loyd 16

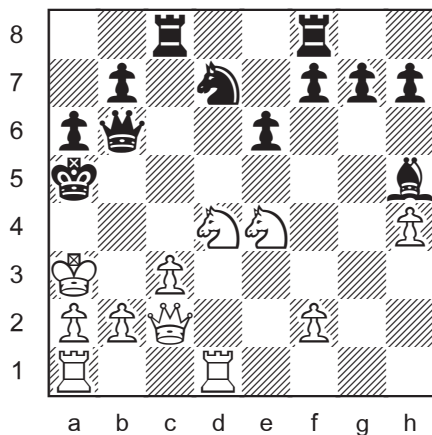


wKe7 bKg6

1.Nf6#



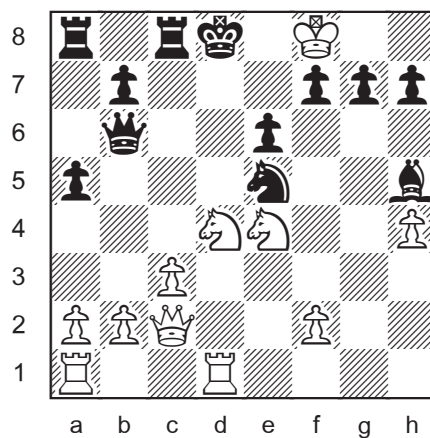
## Double Royal Loyd 17



wKa3 bKa5

1.Qa4#

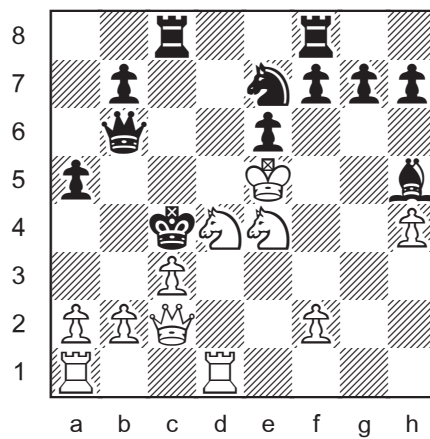
## Double Royal Loyd 18



wKf8 bKd8  
1.Nxe6#



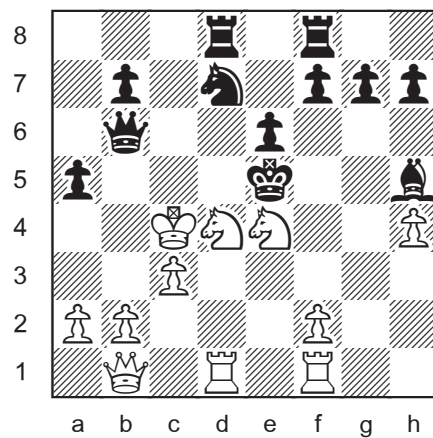
## Double Royal Loyd 19



wKe5 bKc4  
1.Qd3#

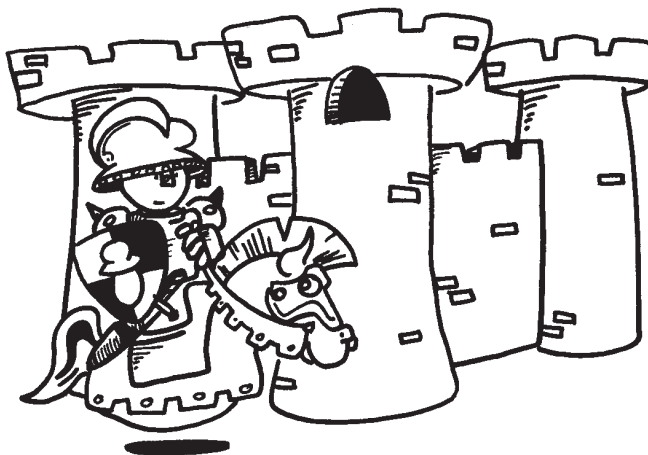


## Double Royal Loyd 20

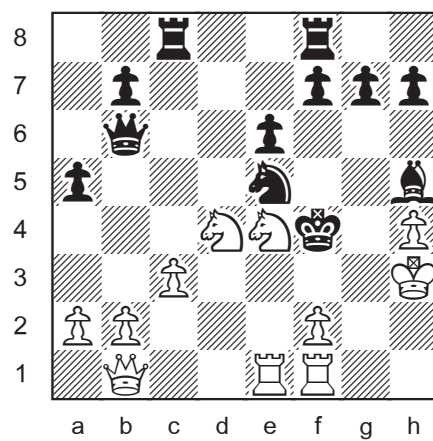


wKc4 bKe5

1.f4#



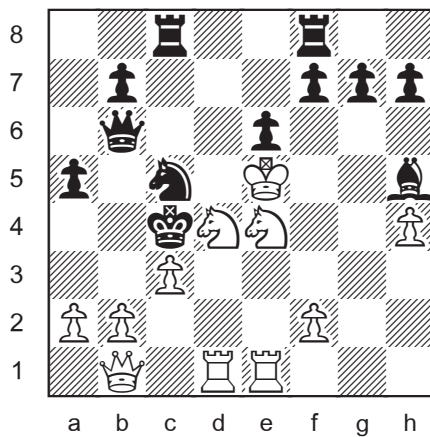
## Double Royal Loyd 21



wKh3 bKf4

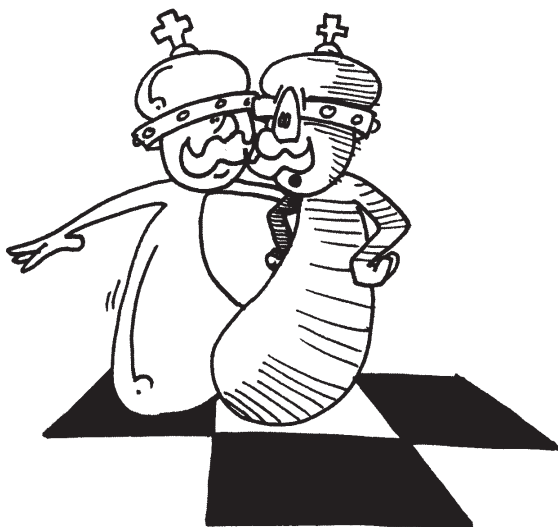
1.Qc1#

## Double Royal Loyd 22



wKe5 bKc4

1.Nd2#



Until next time!

© Jeff Coakley 2025. Illustrations by Antoine Duff. All rights reserved.